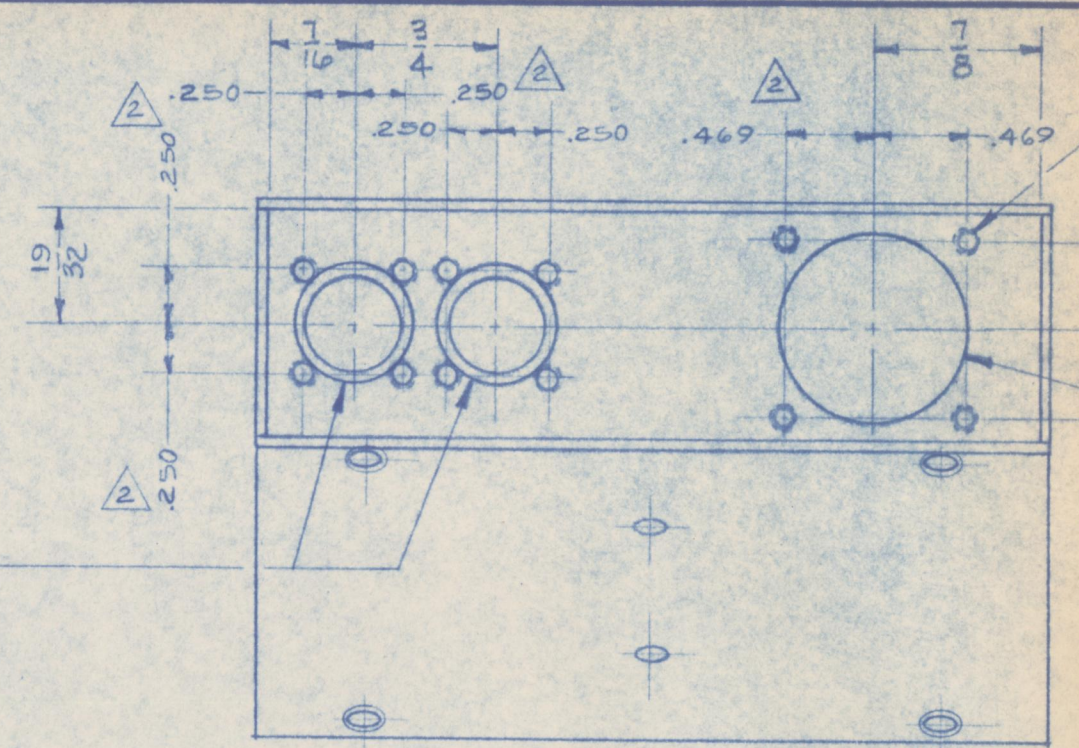


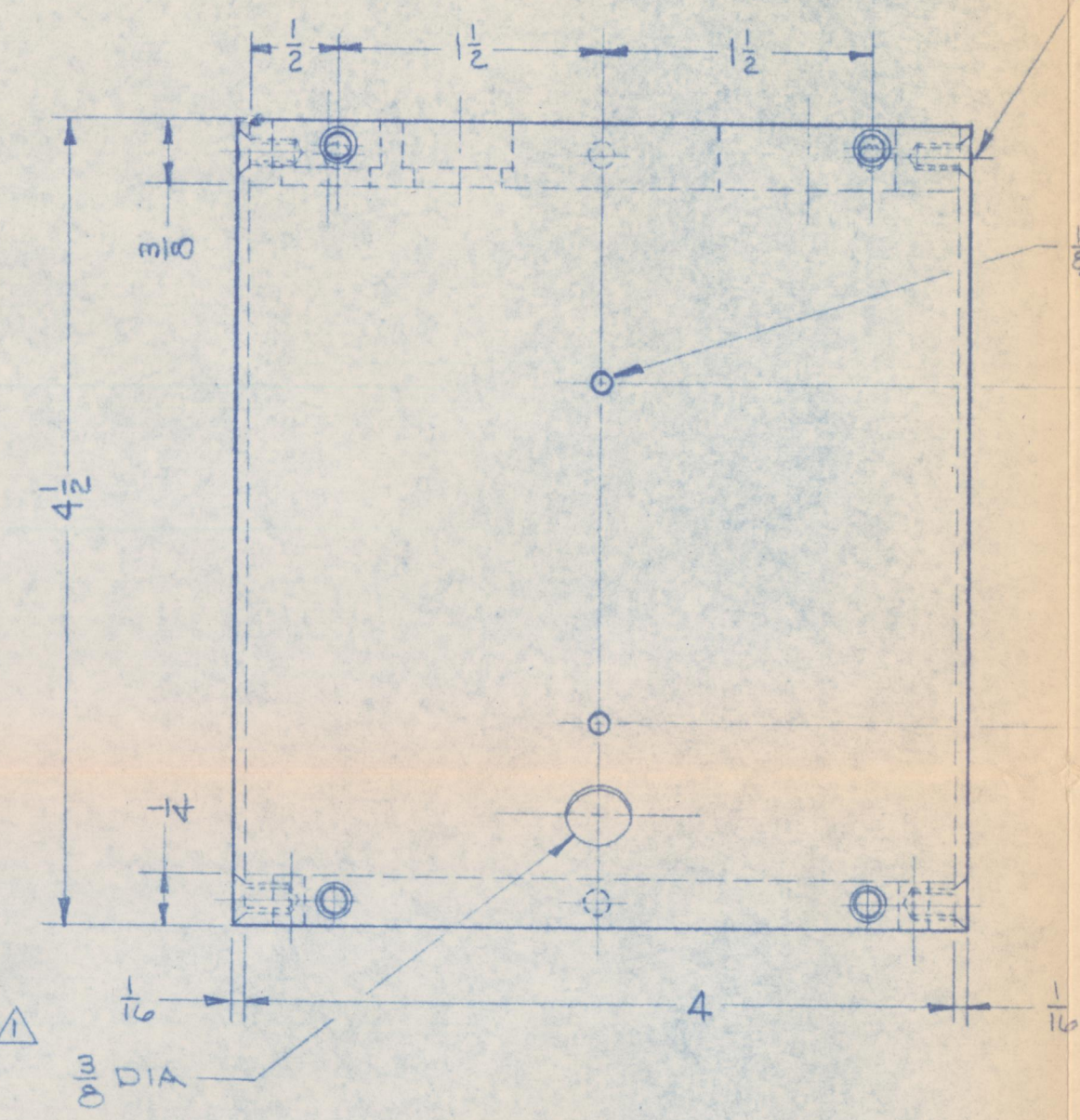
DRILL $\frac{1}{4}$ " DIA & C'BORE
DIA $\frac{1}{4}$ " DEEP



#4-40UNC-2B 12 HOLES

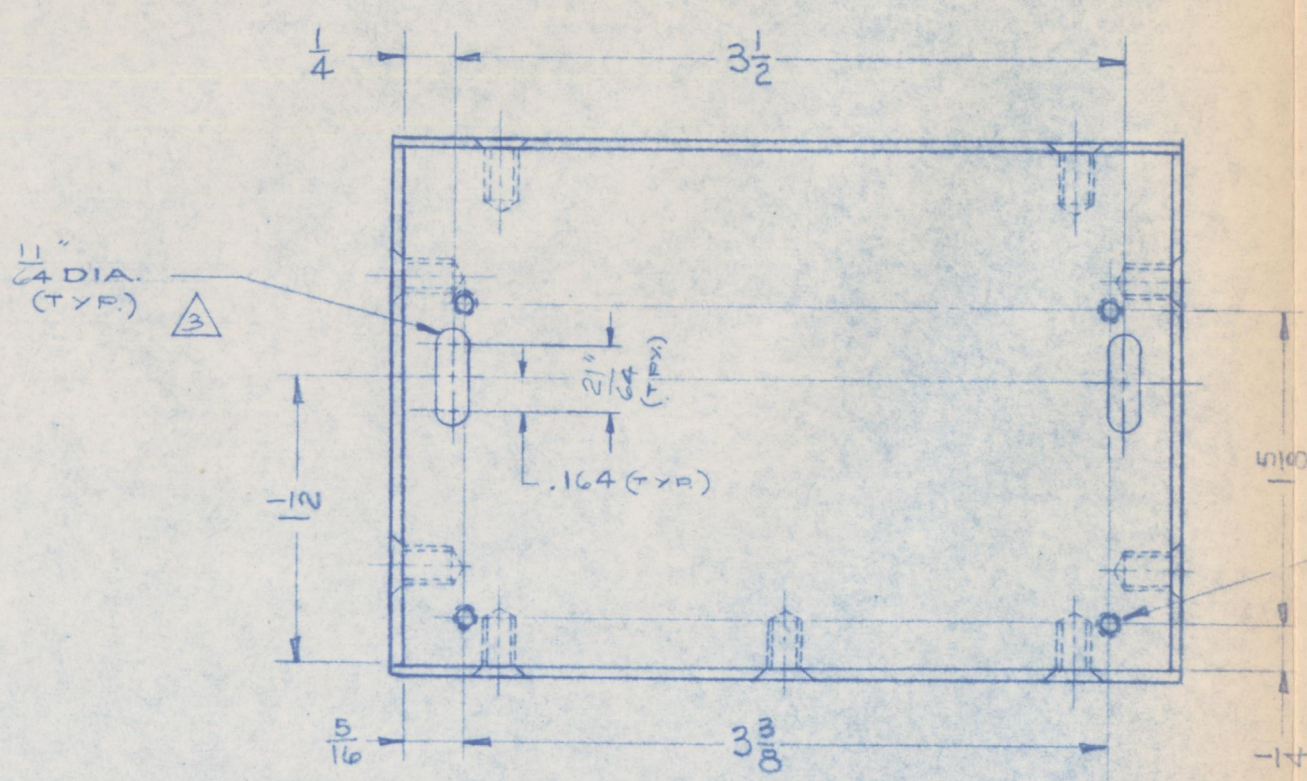
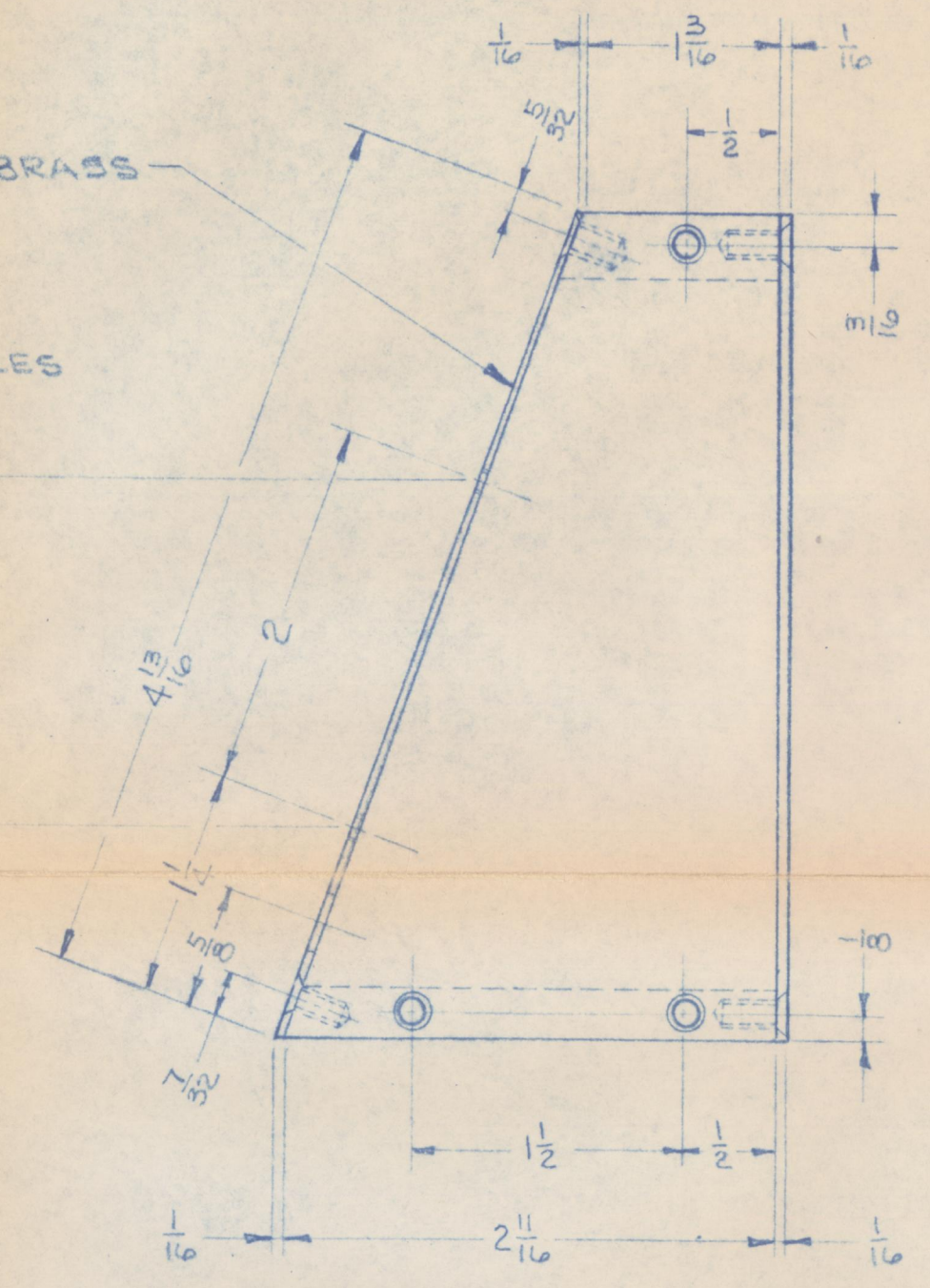
$\frac{1}{16}$ DIA

DRILL & TAP #6-32UNC-2B $\times \frac{1}{4}$ " DEEP
16 HOLES & C'SINK 82° TO $\frac{1}{4}$ " DIA.



BRASS

$\frac{1}{16}$ " DIA HOLES



#4-40UNC-2B-4HOLES

MAT'L: ALL ALUMINUM EXCEPT BRASS
COVER AS SHOWN

NEXT ASS'Y C-532

UNLESS OTHERWISE SPECIFIED
TOLERANCE: FRACTIONS $\pm \frac{1}{64}$, DECIMALS $\pm .005$
BREAK SHARP CORNERS AND EDGES $\frac{.005}{2}$ ALL OVER.
SURFACE FINISH $\frac{63}{25}$ ALL OVER.

| | | | | |
|--------|--------------------------------|---------|----------|--|
| REV. 1 | ADDED $\frac{3}{8}$ " DIA HOLE | 12-2-63 | REF. NO. | |
| REV. 2 | ADDED C'BORE | | REF. NO. | |
| REV. 3 | ADDED C'SINK | | REF. NO. | |



McCARTNEY MFG. CO.
BAXTER SPRINGS KANSAS

ENCLOSURE FOR ELECTRONICS
EQUIPMENT

| | | | |
|-------------|-------|------------|------------|
| SCALE | FULL | DATE | 7-23-63 |
| MATL | NOTED | HEAT TREAT | |
| | | PART No. | APPRD. LEP |
| CATALOG No. | | DWG. No. | C-530 |